



design
engineering
manufacture
apply

CATALOGUE

'Experience' is precious!

'deneyim' en değerli hazinedir...

INDEX

3 - 12

1 - COMPANY PROFILE

13 - 16

**2 - PRODUCTS BY
TYPE & SECTOR**

17 - 20

**3 - RESIDENTIAL
TUNNEL FORMWORK**

21 - 24

**4 - INFRASTRUCTURE
TUNNELLING**

25 - 34

**5 - PRECAST
FORMWORK**

35 - 38

**6 - IN SITU CASTING
FORMWORK**

39 - 42

**7 - SPECIAL MANUFACTURE
MACHINASY & AUXILLARY**

43 - 46

**8 - STEEL DESING PROJECTS
& MANUFACTURE**

47 - 50

9 - TUNNEL FORM APPLY

51 - 70

10 - PROJECTS PORTFOLIO

71 - 72

11 - REFERENCES

73 - 74

12 - MULTIMEDIA

75 - 76

13 - UPCOMING PRODUCTS





THE HISTORY BEHIND DEMA FORMWORKS Dreams do come true.... Our story so far!

Back in 2008 Oktay and Süleyman, partners and owners of Dema Formworks, were employees in another manufacturing company. They were senior managers in a very successful formworks company with exports worldwide. The factory was located on 12,000m² of land and was purpose built, specifically designed for heavy formworks systems, steel works projects and precast manufacture. Süleyman was the Projects Manager and Oktay the Factory Manager. Both mechanical engineers, they had worked there way upto these positions over the years.

Then, In 2008 the world financial crisis hit... the owners of the factory found themselves with investments in foreign currency for new product developments and sadly had to close the factory. Staff were laid off overnight unfortunately without even final salaries or redundancies. Oktay, Süleyman and nearly 200 workers were out of jobs, out of pocket and out of an industry they loved and in which they were successful.

It was at that point the now partners of Dema Formworks joined forces and swore that they would form a manufacturing company and one day would be based in a factory similar to the one from which they were all made jobless. They dreamed that they would build a strong company that would offer a secure livelihood to their workers by simply offering the world modern, quality formwork solutions with competitive pricing and exemplary customer service.

With zero financing, the start was slow and the road was precarious. They started with a small crew of expert welders and manufacturers, a core of staff that left with them from the previous factory. They hired space and manufacturing time in another factory on profit share basis. Luckily customers from the previous business supported them with repeat orders and momentum grew and soon they required more space as the place they were timesharing could not cater to the demand.

The partners rented a small 400m² manufacturing unit and offices and continued manufacturing. Growth continued and by 2011 they added another 800m² manufacturing unit and took on more staff, mostly from the factory that had gone bust. In 2013 they moved to a 2500 m² manufacturing unit and growth steadily continued with new product lines added and new markets opened. In 2014 they acquired a 10 acre industrial plot to build their own factory at a future date.

But sometimes plans change...in 2017 an opportunity arose. A factory had become available perfect for their manufacturing needs, for both their present and future growth...Oktay and Süleyman made a quick decision and they and their growing team of steel workers and welders moved into their new factory ...they moved home!

Yes, after almost ten years Oktay and Süleyman and around 60 of the previous factories workforce have moved back into the factory they were forced to leave in 2008. The original factory that they had left as employees in 2008 had become available from the bank. This time they moved back in as company owners and they intend to make it home for their diligent and experienced workforce and the Dema Formworks company for many years to come.

We warmly welcome you to visit our 'new' factory!

Dreams do come true!



From humble beginnings with the companies official formation in 2011, Dema continues to grow exponentially and the company has increased its market share year on year since formation. With an enviable reference list to date including customers from Jamaica through to Mongolia, Dema Formworks has exported to a growing list of over 38 countries on four continents and is becoming a truly global specialist formworks systems, precast moulds and steel projects and manufacturing company.

To support our growth and constantly strive to improve in all our operations Dema Formworks has attained;

ISO 9001:2015 Quality Management Systems Certification
ISO 14001:2015 Environmental Management
OHSAS 18001:2007 Health and Safety
EN1091-1+A: 2011 Manufacture of Steel Components
EN1090-2:2008+ A1:2011 class 135 Welding Certification
ISO 3834-2:2005 Manufacture of Steel Components
ISO 9606-1:2013 Weld Qualification Certification
TUV Nord Accredited WPQ & PQR Welding Certification



Dema Formworks is located in Ankara, Turkey in a purpose built 12,000m² steelworks, formworks and precast mould manufacturing facility and project design centre. The 120m long factory building includes two manufacturing halls totalling 5000m², a 1000m² finishing and painting area, a 900 m² administration and management office area, and 5000m² of depot complete with both portal and tower cranes for loading customer orders. In planning for future growth, an additional site has already been acquired for a second facility and a purpose built 10,000m² manufacturing facility is in the design stages.

The companies international business is coordinated from its International Sales and Service Centre based close to Exeter in the UK. Customers worldwide are serviced through a select and growing number of representatives and agents.

Dema Formworks has a very hands on approach and the owners are actively involved in the day to day management of the company. Quality control and customer satisfaction is our driving force and we send our technical support staff worldwide to assist with assembly, installation and turn key handover of our steelworks and formwork / mould systems.

Dema strive to remember that our company's origins and foundation was based upon repeat business based upon customer satisfaction and retention and it is ingrained in the very ethos of our company operation. We take pride in our work no matter how big or small. With this management and manufacturing approach and winning attitude Dema Formworks is able to offer each and every customer and project the necessary care and attention to detail, maintain stringent quality control standards and deliver designs and products to a high standard yet at a competitive price point.

Dema Formworks would like to thank you for taking the time to browse our company profile and we welcome your visit and/or your projects and the opportunity to become your long term formworks solution partner.



Oktay Soysaltürk
General Manager & Founder

A university graduate with a degree in Mechanical Engineering specializing in Mechanics.

In 2001 Oktay entered the world of formworks and steel construction with a position at Panel Machinery then Turkey's leading formworks manufacturer, with a position as workshop drawings controller preparing the project drawings for manufacture.

In 2003 he was promoted to Manufacturing Manager and with hard work and diligence he was again promoted in 2005 to Projects Manager. With the closure of the company in 2008, Oktay with responsibility for his teams of trusted and competent workers and demand from many of his international customers decided to find a venue to continue manufacturing.

In 2009 through to 2011 he successfully started as a special formworks projects team providing on manufactured goods produced at another factory. There his task was to source customers and designing and manufacturing formworks and steel construction projects under the Bayraklar Machinery brand name.

With the need to improve manufacturing capacity and production line availability and product offering Oktay and their team started their own company Dema Formworks with in 2011. By title?? General Manager of the company but like in the past he is very much 'hands on' being involved in all aspects of the companies' daily operations, growth and development.

Oktay Soysaltürk, who is currently the owner of Deneyim Makina manufacturing company and Dema Formwork exporter company, is proud of exporting to nearly 40 countries and the quality of his products. Dema, which sets its target to export to at least 80 countries, is taking firm steps forward.

'Experience' is precious!

Thank you for taking the time to look at the manufacturing expertise and product range that Dema Formworks offer. Please note that when studying the catalogue that particularly in regards to steel projects and precast the possibilities are a veritable 'ocean' in terms of design.

It is impossible to list the one off, unique projects and countless designs we have been involved in. If you have a particular steel project or a particular precast or concrete design requirement and you need assistance please do not hesitate to contact us. If it is shaping concrete using steel forms or moulds or if it is steel manufacture we like to think our team will be able to meet your inquiries and come up with a design solution. That is why our motto is

'Experience' is precious!

WHY CHOOSE DEMA FORMWORKS?

Highly experienced team offering top quality products at a competitive price. Dema is a company with drive, a big heart and bags of talent!

If you have read the previous history of the company you will understand our driving goals and company ethos. Dema was created by its workers for its workers and our aim is to create a sustainable company offering a secure working environment for employees old and new. We believe that to do this we need to offer a quality product and service at a truly competitive price.

As a young and dynamic company, Dema has an extensive talent pool of formwork, steel and precast design and manufacture experience in its owners, managers, project department and factory employees. Utilising this skillset, Dema has a fantastic opportunity to strengthen and broaden its product offerings. Dema Formworks recognizes it needs to be progressive thinking, and invest time and energy in R&D and be diverse in its' product offering yet never forgetting its primary directive which is to offer an unmatched quality to price ratio.



ISO9606-1:2013 Weld Qualiification Certification also WPQ and PQR Certification accredited by TÜV Nord

With an onus on establishing both local and international clientel relationships for long term repeat custom, Dema is well placed for continued growth. As a hands on company with the partners involved at every aspect of the customer journey upto and including service and installation & site visits,; our clients are assured personal attention at every stage of the manufacturing, delivery and instalallation process.

This approach has resulted in our steady growth and in Dema Formworks establishing a solid client base. By continuing this steadfast approach we strive to ensure satisfied customers, repeat orders and continued growth.



Selected testimonials- Customer satisfaction is very important to Dema Formworks

WE AIM FOR QUALITY IN EVERYTHING WE DO

Our job is moulding steel for a wide range of structural steel applications and also shaping steel into designs to help companies provide mould and precasting delivery systems for concrete. We also design formworks or direct in situ on site applications in infrastructure and residential construction. Accordingly our staff are trained to the highest international standards.



Dema Formworks Quality Management System is important to our business simply because we value our customers. We strive to provide our customers with products and services which meet and exceed their expectations.

We are committed to continuous improvement and have established a Quality Management System which provides a framework for measuring and improving our performance.

We have the following systems and procedures in place to support us in our aim of total customer satisfaction and continuous improvement throughout our business practices:

- Regular gathering and monitoring of customer feedback.
- A customer complaints procedure.
- Selection and performance monitoring of suppliers against set criteria.
- Training and development for our employees.
- Regular audit of our internal processes.
- Measurable quality objectives which reflect our business aims.
- Management reviews of audit results, customer feedback and complaints.

Our internal procedures are reviewed regularly and are held in a Quality Manual which is made available to all employees. We have rigorous quality assurance procedures in place to ensure 'right first time' results. Our approach delivers significant improvements in the quality of the final manufacture and installation, in line with our zero defects philosophy.

Each manufactured element has an individual reference number and upon completion undergoes final inspection checks including, where applicable, weld and/or pressure testing. There is full transparency within our quality procedures which includes client witnessing and sign off.



SAFETY & HEALTH GOALS

By establishing effective HSE procedures and standards we aim to:

- Provide workers with a safe work environment with full consideration for their employee health whilst at work
- Conduct routine and regular workplace safety and health related inspections
- Provide Personal Protective Equipment and enforce utilization
- Develop and implement safety and health work procedures and rules and review routinely and regularly
- Provide ongoing and measurable safety training
- Enforce safety rules and appropriate discipline approach to work safety
- Provide ongoing property conservation practices

Our Health and Safety procedures are explained in detail in our Health & Safety Operational Manual. To summarize our activities are based primarily around minimizing risk associated with

- Working at height
- Hot works
- Noise and dust
- Material and manual handling



Dema Formworks aim is to have an environmentally sustainable ethos in all business activities. We engage at every phase of the manufacturing and delivery process to reduce waste, recycle and minimize environmental impact:

We are committed to diverting 90% of the waste we produce and have developed and implemented a waste management policy. In short we are committed to

- Prevention of pollution and we monitor the effect of our operations on the environment and local community.
- An ethos of continual environmental improvement.
- Develop efficiency in the use of energy, water and materials.
- Implement and revise waste management, recycling and reuses procedures.
- Comply with all legislation relevant to our industry.
- Provide ongoing training to staff to enhance awareness of relevant issues and to ensure effective management of our environmental impacts.

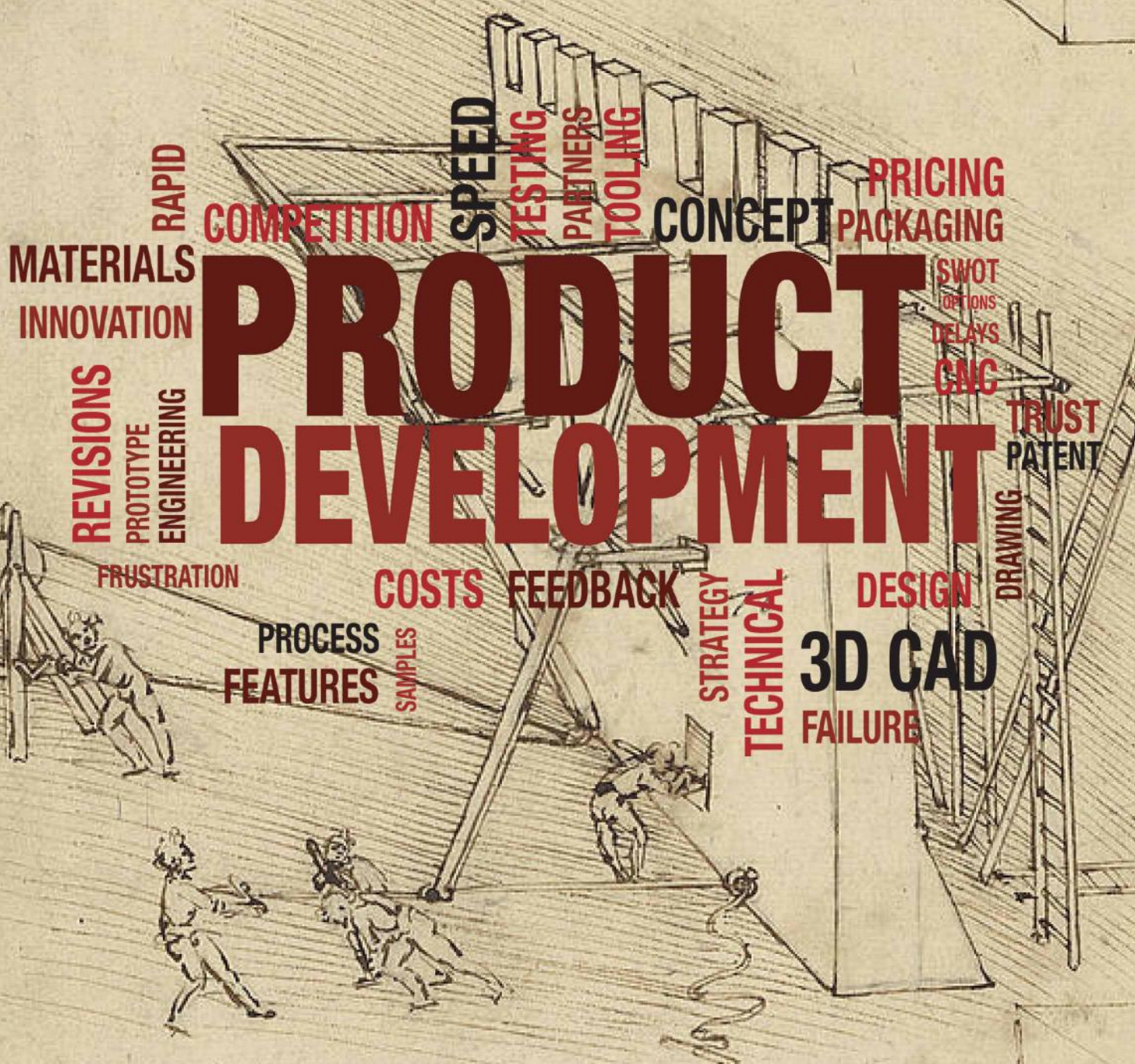
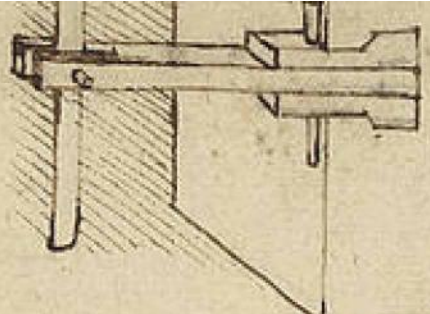




A truly expansive range of expertise offered, from design to manufacture to turn key delivery across many construction and fabrication sectors



Handwritten text in a cursive script at the top of the page, appearing to be bleed-through from the reverse side.



PRODUCT DEVELOPMENT

REVISIONS **PROTOTYPE ENGINEERING** **FRUSTRATION** **PROCESS FEATURES** **SAMPLES** **TECHNICAL** **FAILURE**

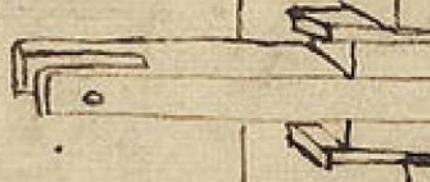
MATERIALS **INNOVATION** **COMPETITION** **SPEED** **TESTING** **PARTNERS** **TOOLING** **CONCEPT** **PRICING** **PACKAGING** **SWOT** **OPTIONS** **DELAYS** **CNC** **TRUST** **PATENT** **DRAWING**

DESIGN **3D CAD** **STRATEGY**

COSTS **FEEDBACK**

"What we know is a drop, what we don't know is an ocean."
 — Isaac Newton

Design possibilities utilizing steel and concrete really do represent an ocean of possibility. At Dema Formworks many of our products are designed in partnership with our clients specific requirements. If you have a product need that is not on our current list of product manufacturing experience please enquire, we pride ourselves on our technical creativity. Together we can 'discover the ocean'.



Industrial Building

- Complete Industrial Units
- Steel Construction Factories
- Concrete construction factories
- Industrial Fans
- Turnkey Precast Factories

Residential

- Tunnel Form Systems
- Prefabricated Villa Systems
- Column & Beam Systems
- Façade Panels
- Retaining Walls
- Solid and Twin Wall Moulds
- Omnia Slab Moulds
- Low-Cost Housing Systems

Sports Facilities

- Stadiums Concrete and/or Steel
- Stadium Precast Seating
- Industrial Fans

Education

- Façade Panels
- Tunnel Form Systems
- Retaining Walls
- Garden Walls
- Steel Construction Buildings
- Concrete Construction Buildings
- Industrial Fans

Hotels

- Tunnel Form Systems
- Façade Panels
- Retaining Walls
- Steel Construction Buildings
- Concrete Construction Buildings
- Industrial Fans

Commercial /Shopping Centres

- Tunnel Form Systems
- Wall Formwork
- Beam Formwork
- Column Formwork
- Climbing Systems
- Piling Formworks
- Foundation Formwork
- Steel Buildings
- Industrial Fans

Agriculture

- Silos
- Grain Storage
- Steel and/or Concrete Farm Buildings
- Industrial Fans

Sewer/Sewage Treatments/Drainage

- Box Culverts
- Trench Lining

Roads

- Infrastructure Tunnelling
- Jersey Barrier Mould
- Pedestrian Bridges
- Retaining Walls
- Sound Barriers
- Industrial Fans

Rail/Metro

- Infrastructure tunnelling
- Railway Sleepers
- Cut and Cover tunnels
- Box Culverts
- Sleeper Transportation Vehicles
- Slabtrack
- Industrial Fans

Power/ Hydroelectric

- Infrastructure tunnelling
- Underwater turbines casings
- Transformer Substations

Military/Security

- Security walls
- Prison cells
- Military Housing
- Aircraft Hangars
- Storage Hangars
- Steel Buildings
- Concrete Buildings
- Military grade container buildings
- Industrial Fans

Bridges

- Footing formwork
- Bridge support column formwork
- Pedestrian Bridges
- Balanced Cantilever Girder Form

Sea Defence

- Sea Retaining walls
- Tetrapods
- Underwater Turbines Casings

Mining

- Infrastructure Tunnelling
- Box Culverts
- Trench Shoring/Lining

Containers & Temporary Facilities

- Military Grade Container Buildings
- Lightweight Container Buildings
- Industrial Fans

Production/ Transportation Systems

- CDS- Concrete Distribution System
- Hydraulic Concrete Feeder Bucket
- Carousel Formwork Mould Lines

Infrastructure

- NATM/Cut and Cover
- Railway Tunnelling
- Pedestrian Tunnelling
- Metro Tunnelling
- Highway Tunnelling
- Dam Tunnelling
- Box Culverts
- Trench Shoring/Lining
- Gallery Formwork
- Siphon Formwork
- Energy & Water Tunnelling
- Invert Formwork
- Blacksmiths Cart
- Membrane Laying Trolley Vehicle

In Situ

- Residential Tunnel Formwork
- Columns- all types
- Shaft Core Wall Moulds
- Beam Formwork
- Lintel Formwork
- Foundations Formwork
- Piling Formworks
- Table Formwork
- Climbing Formwork
- Hydraulic Climbing Formwork
- Balanced Cantilever Girder
- Handset Wall Formwork
- Wall Formwork
- Retaining Walls

Steel Projects & Design

- All Types of Steel Buildings, Commercial, Industrial, Factories, Residential, Shopping Centres, Sports Facilities etc.
- Steel Pedestrian Bridges
- Platforms
- Special Steel Projects
- Factory Transport Systems
- Agricultural Steel Projects
- Dam & Hydroelectric Steel Projects

Precast

- Girder Formwork
- Pier Formwork
- Manhole Formwork
- Prestressing Systems
- Prefabricated Homes Formwork
- Column Mould
- Beam Mould
- Piling Mould
- I, H, L, T, TT Beam Mould
- Modern Substation Forms

- Transformer Substation Mould
- Transformer Substation Roof Mould
- Telecommunications Logar Mould
- Telecommunications Posts Mould
- Telecommunications Tower
- Water Channel Moulds
- Guttering Moulds
- Retaining Wall Block Moulds
- Motorway Barrier Moulds
- Foundation Formwork
- Prestressed Flatbed Moulds
- Prestressed Beam Formwork
- Purlin Mould for Roofing
- Roof Truss Formwork
- Garden Wall foormwork
- Stair Formwork
- Jersey Barrier Formwork
- Parapet & Drains Mould
- Crane Beam Formwork
- Stadium L,U,T,type Seat moulds
- Verticle Multi Battery Formwork
- Single Double /Twin wall moulds
- Single Double /Twin wall carousel
- Various Slab Moulds
- Horizontal Flatbed Table Formwork
- Tilting Table Formwork
- Verticle Multi Battery Formwork
- Turnkey Precast Carousel Systems
- Fence/Perimeter Formwork
- Security Wall Formwork
- Carousel Precast Systems

Special

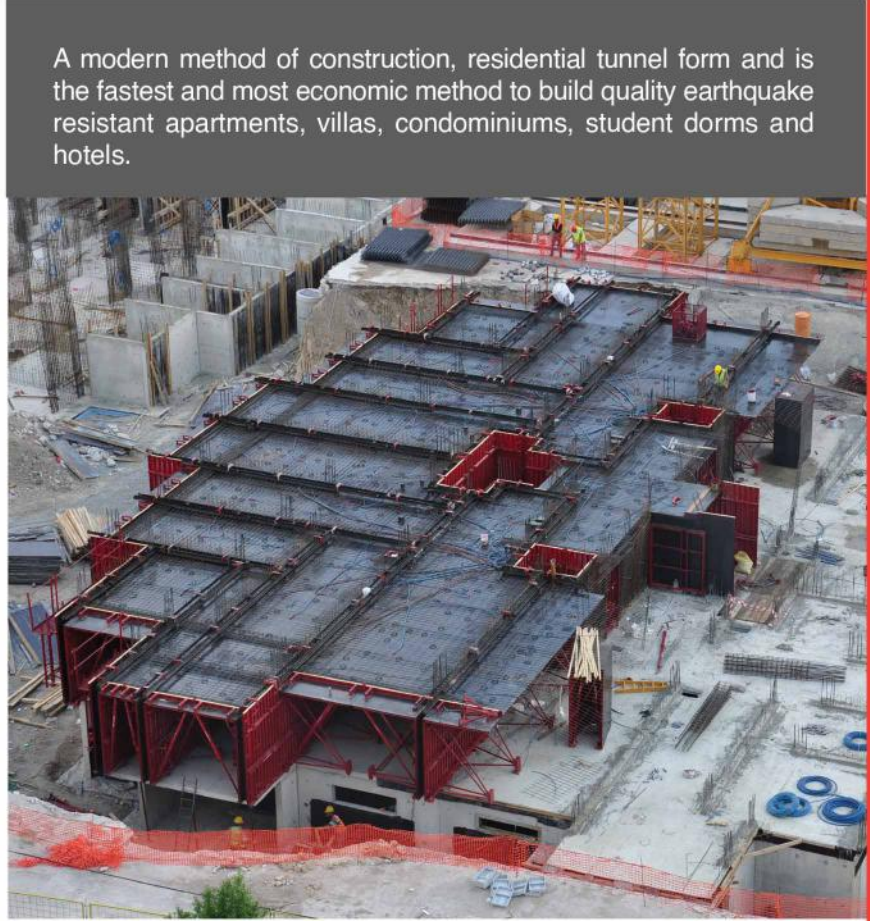
- Industrial Fan Systems
- Prefabricated Homes Moulds
- CDS- Concrete Distribution System
- Hydraulic Concrete Feeder Bucket
- Portal Crane System
- Transformer Cabin
- Prestressing Roll Steel Feeder
- Vacuum Room
- Trench Shoring
- Slag Handling Trailers
- Bomb Resistant Wall Formwork
- Gantry Cranes
- Mobile Gantry Cranes
- Façade Elements Moulds
- Military Aircraft Hangars & Depots
- Pre Stressing Feeder Machine
- Rebar / Mesh Bending Machines
- Crushing & Screening Systems
- Outsource Manufacturing
- High Volume Concrete Bucket



Dema Formworks a world leader in the design, manufacture and shell construction building with tunnel formwork. Dema Tunnel Formwork Systems allow quick, cost effective construction of villas, condominiums, social accommodation, student residences, hotels and mass housing. Dema have completed residential projects on four continents and in multiple countries from Jamaica through to India.

40% of all residential units in Holland and 70% in Turkey and preferred and /or specified by government housing ministries around the world. Pictured, daily wall and slab casting with tunnel form system in Turkey.



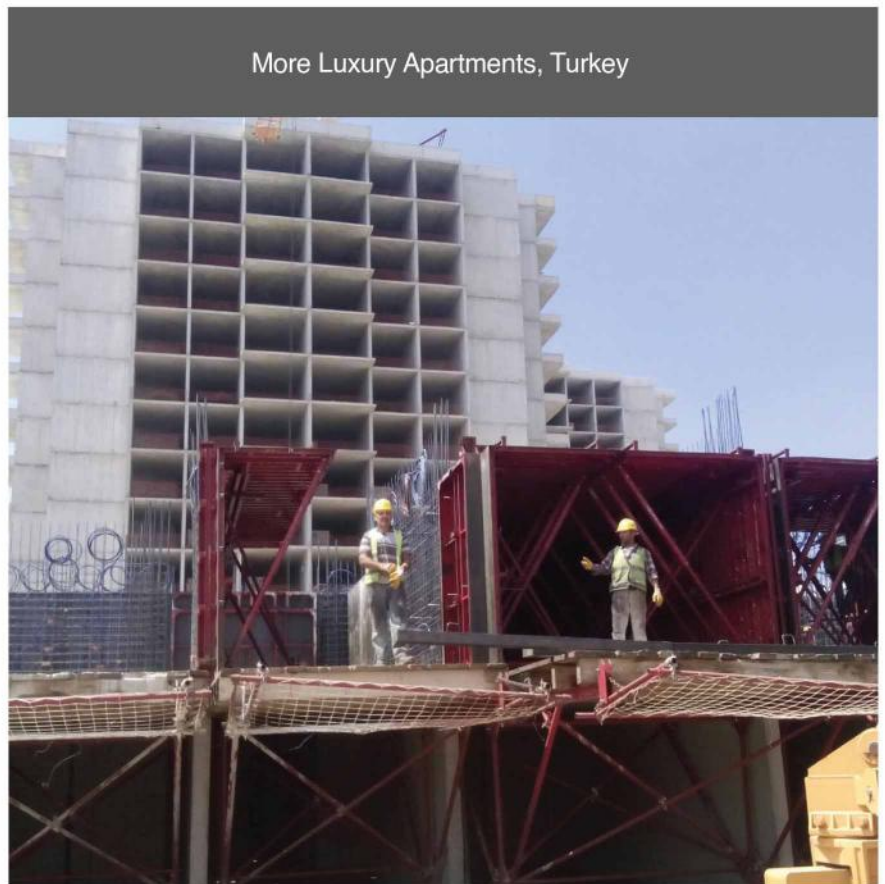


A modern method of construction, residential tunnel form and is the fastest and most economic method to build quality earthquake resistant apartments, villas, condominiums, student dorms and hotels.

Specially designed villas in Iraq



Two of Dema's five current residential tunnel form sites in Saudi Arabia - See more project samples from around the world in Projects Portfolio Section 8





Dema Formworks has been manufacturing innovative and specially designed tunnelling systems for many years. For dams, hydroelectric, rail, metro and roads Dema has a tunnelling solution and auxiliary equipment to meet your project requirements.

Tunnelling in Turkey



Tunnels for High Speed Train systems in Ankara, Turkey- 3 specially designed hydraulic cut and cover type infrastructure tunnel form work units used to lay 3kms of tunnels.





Various infrastructure tunnels manufacturing



Infrastructure tunnels, Georgia



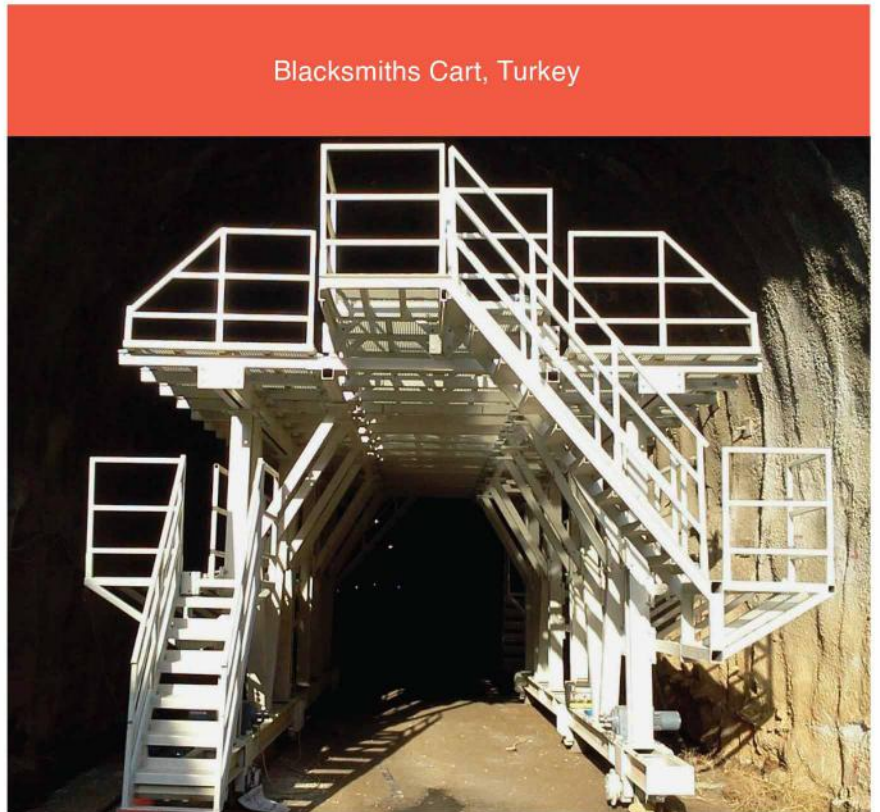
Box Culvert Formwork, Iraq



Invert Formwork, Iraq



Blacksmiths Cart, Turkey

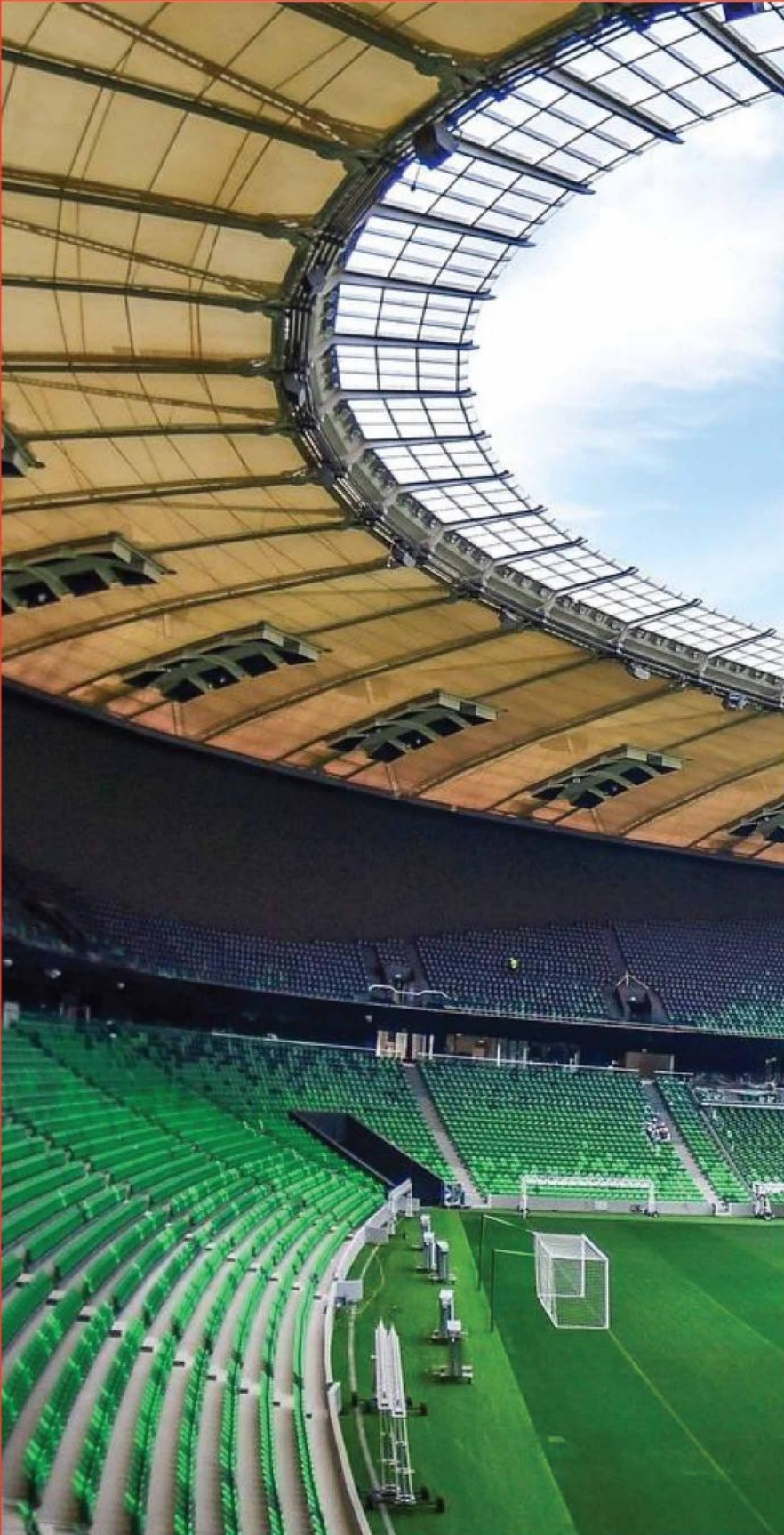




Precast design can only be described as an 'ocean' in terms of possibilities. There is almost no limit to the design possibilities. From a simple table to produce wall panels to pilings formwork to the most complicated concrete distributions systems and carousel manufacturing lines Dema Formworks can assist you in shaping concrete. Dema Formworks have the know how to provide cost effective solutions giving you reliable results in your casting... time after time.

Dema Formworks is a major player in precast moulds and formwork systems design in the region and has a growing influence world wide. With an extensive and growing product range and design capabilities Dema Formworks is waiting to discuss your precast formwork ideas and requirements.

Stadium Precast Formwork World class stadiums include:
Krasnodar - Russia, Karbala - Iraq, Beşiktaş - Turkey





Box Culverts / Manhole Moulds - For Riyadh city new installed infrastructure drainage system works 2016 -ongoing. An astonishing 440,000 culverts to be cast.



I Beams (Girders)



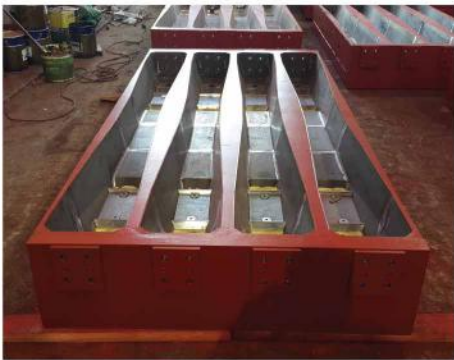


Transformer Substations



Precast Tables - Flat, Tilting & Battery Types





Railway Sleeper Moulds- Dema Formwork manufacture a range of sleeper moulds eg B57 B07, Slabtrack



Factory & Industrial Unit Precast Formwork Moulds for turnkey construction





Dema design and manufacture the full formwork moulds required to cast turnkey precast concrete factory and industrial units



Sea & Flood Defence





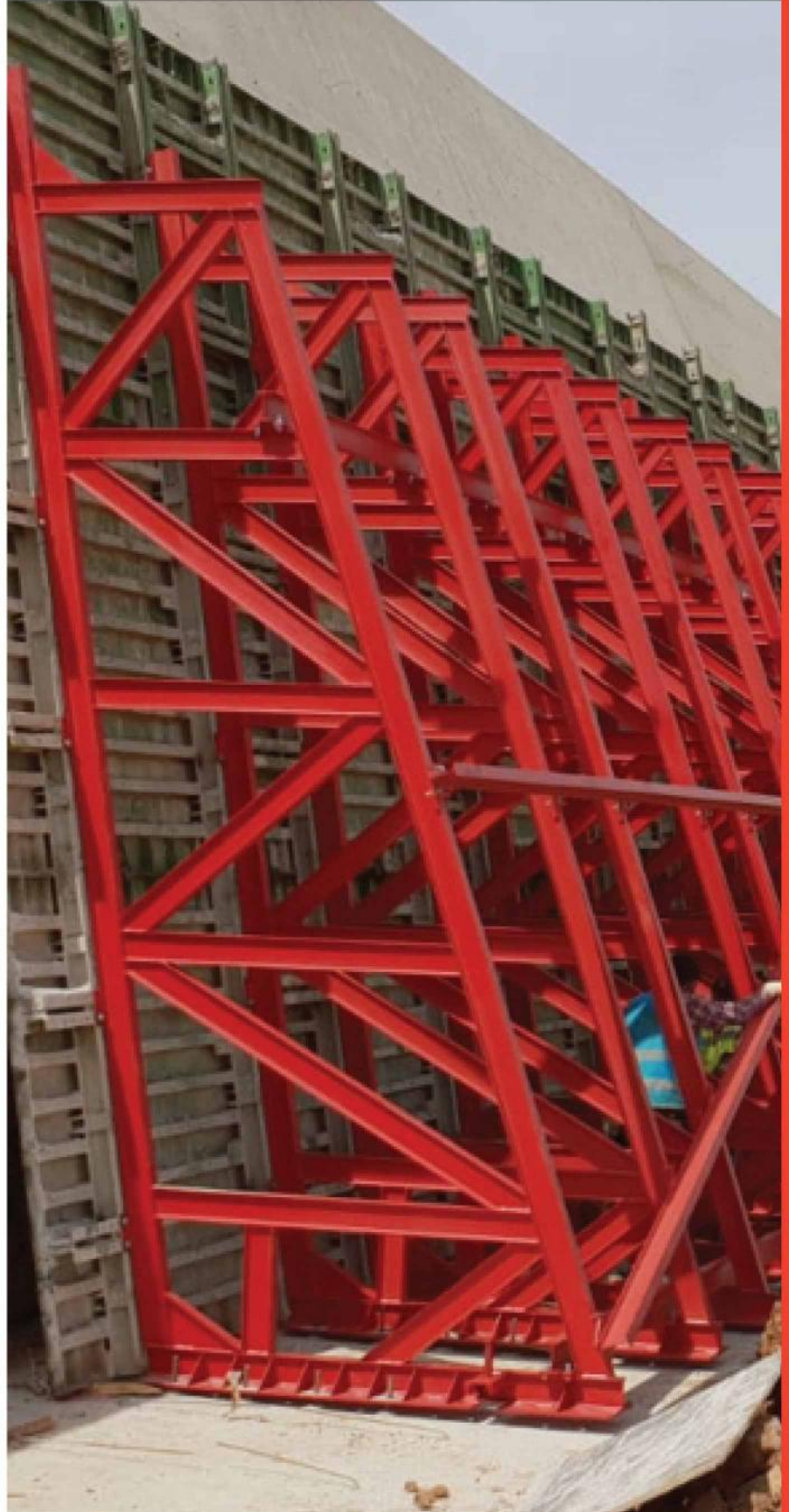
Dema Formworks product range include conventional props, scaffolding and plywood based formworks, table formwork and climbing formwork systems. together these make up the mainstays of in situ casting of flexible and complex one off form shapes. Dema Formworks also offers a bespoke in situ design service for more challenging and unique projects..

Pipette formwork and climbing formwork for a HES project, Turkey

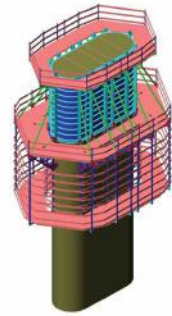




Column & Retaining Wall Formwork



Bridge Footing Column Self Climbing Formwork





Concrete Distribution Systems





Auxillary Manufacture



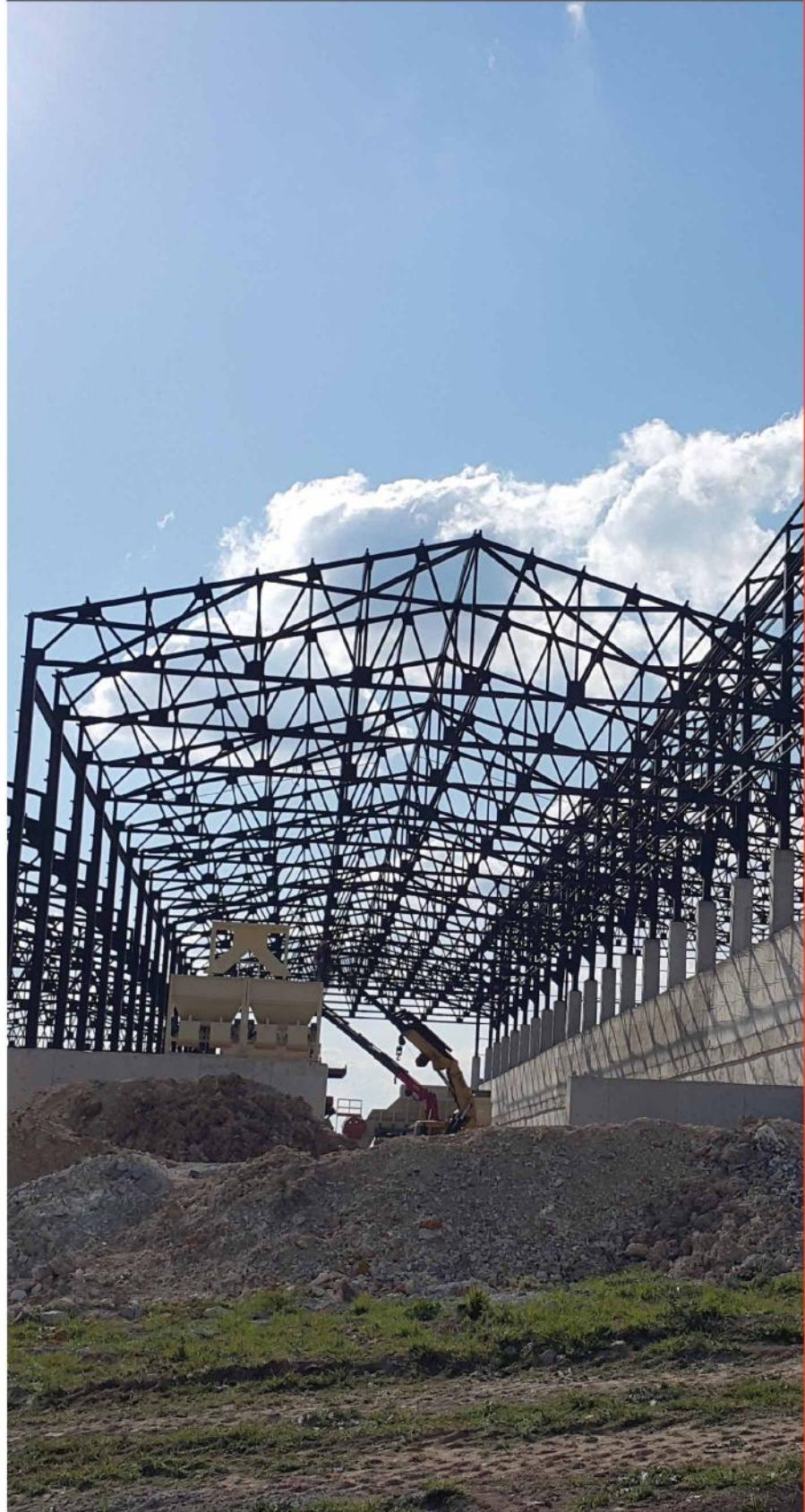


Vacuum Chamber, Germany





Turnkey Coal Processing factory , Turkey



Communication Platform / Watchtower US Engineering
Corps, Afghanistan



Mosul Dam Dentate Steel Construction



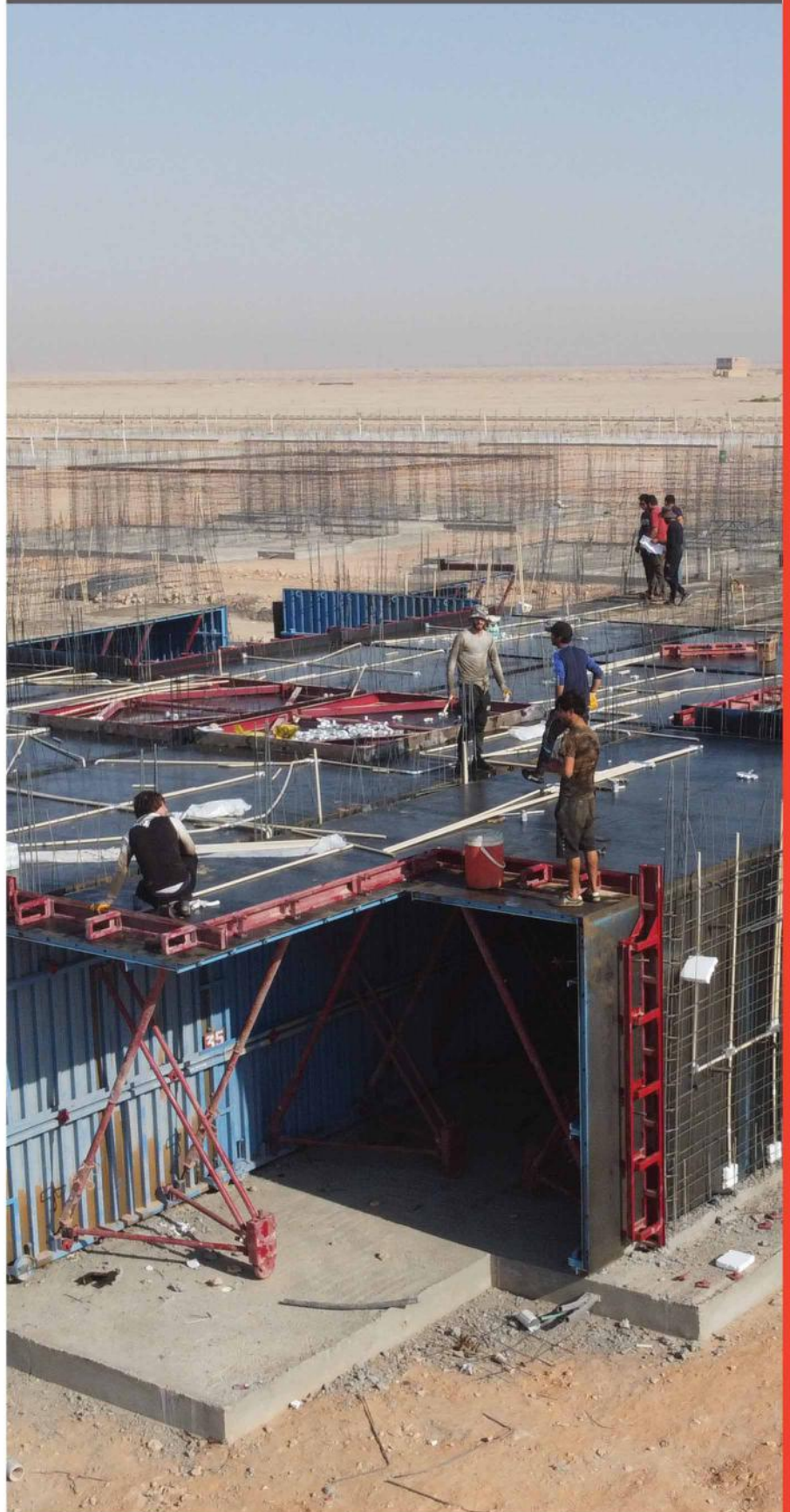


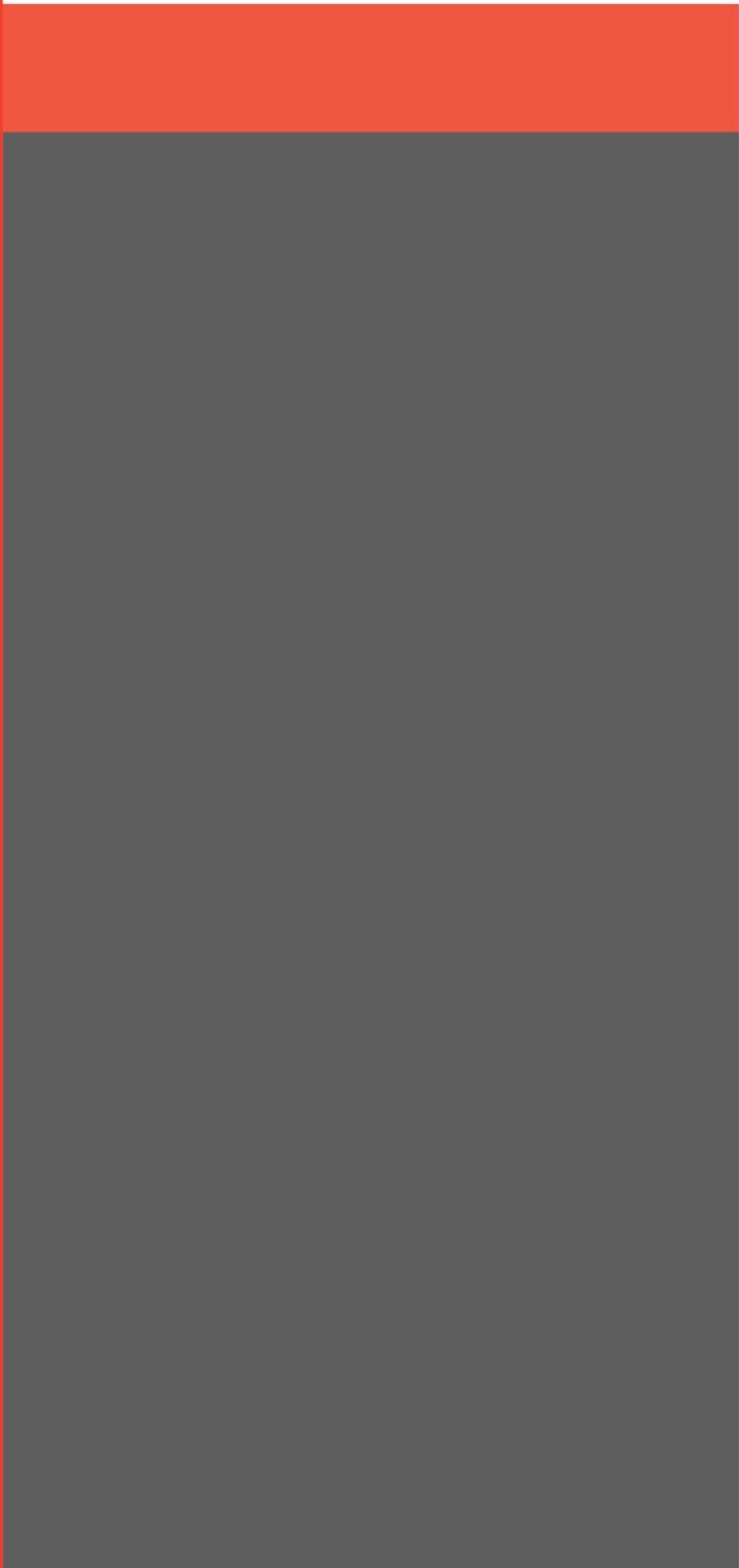
6,780 Apartments Tunnel Form Apply Sub - Contracting Business, Qatar





3.000 Double Storey Villas, Al-Najaf







OWNER:	LOCATION:	ARCHITECTS:	ELEC. ENG.:	CHECKED:	REVISION:	DRAWING TITLE:	TOTAL NO.										
		STRUC. ENG.:	DRAWN:	APPROVED:	<table border="1"><thead><tr><th>No.</th><th>Description</th></tr></thead><tbody><tr><td> </td><td> </td></tr><tr><td> </td><td> </td></tr><tr><td> </td><td> </td></tr><tr><td> </td><td> </td></tr></tbody></table>	No.	Description									DATE	
No.	Description																

ELVANKENT, ANKARA, TURKEY

Tunnel Form System, 1 Set Project consists of 7 block with 14 floors each block. Shell construction completed in 7 months



4+1 TİP
176.21 m²

SALON	32.36 m ²	GENÇ ODASI	11.56 m ²	BALKON	13.22 m ²
MUTFAK	16.30 m ²	ÇOCUK ODASI	11.56 m ²	BALKON	4.82 m ²
OTURMA ODASI	17.04 m ²	BANYO	6.30 m ²	ANTRE	5.75 m ²
EBEVEYN ODASI	19.02 m ²	EBEVEYN BANYO	3.12 m ²	HOL	9.05 m ²

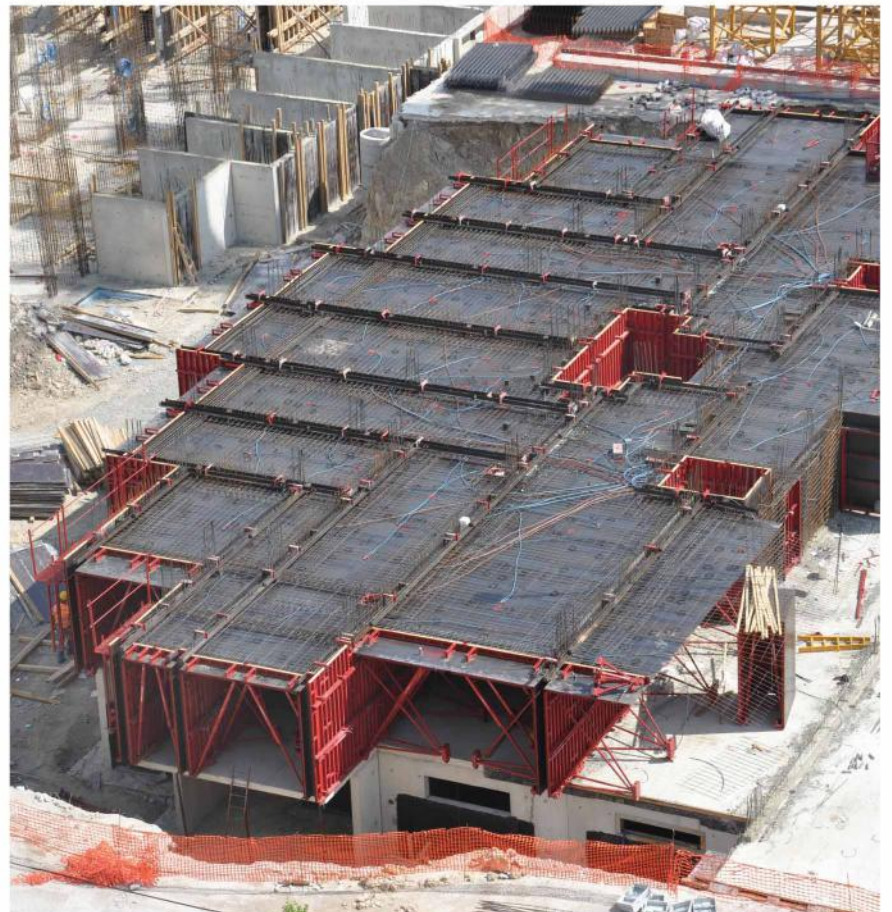
TOPLAM NET ALAN 148.90 m²
TOPLAM BRÜT ALAN 176.21 m²



3+1 TİP
148.36 m²

SALON	31.36 m ²	YATK ODASI	11.62 m ²	BALKON	4.20 m ²
MUTFAK	14.88 m ²	BANYO	6.30 m ²	ANTRE	6.16 m ²
OTURMA ODASI	15.71 m ²	EBANVO	3.12 m ²	HOL	9.85 m ²
EBEVEYN ODASI	18.70 m ²	BALKON	10.90 m ²		

TOPLAM NET ALAN 130.90 m²
TOPLAM BRÜT ALAN 148.36 m²



ERYAMAN ANKARA, TURKEY

Residential, Tunnel Formwork. Bahçe'n consists of 9 block and 618 luxury 4+1apartments of 170m² (155m² net) Shell construction completed in 10 months.



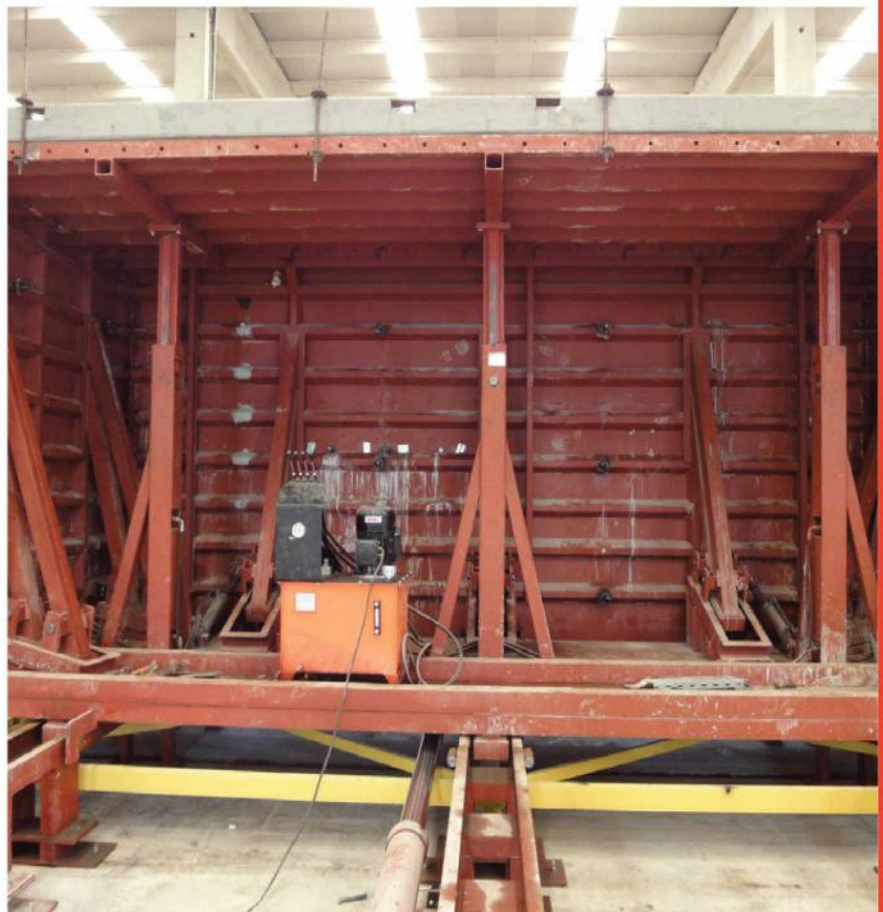
ESENYURT ISTANBUL

Luxury Apartments, Istanbul- Esenyurt Residential Tunnel Formwork,1 Set



INNOVATIVE AFFORDABLE VILLAS, Kingston, Jamaica

1 set residential tunnel form. Interestingly here the construction company uses normally in situ cast tunnel form utilizing offsite methodology. The wall and slab units are cast in the factory on ready prepared concrete bases. Units are then fully fitted out and painted and delivered to sites all over Jamaica and fitted in multiples of one, two or three bedroom homes on raised foundation pads. Company currently markets three different sized alternative homes. The ultimate in natural disaster resistant quality affordable housing.



RESIDENTIAL PROJECT, Riga, Latvia
Residential Tunnel Form System- 1 Set

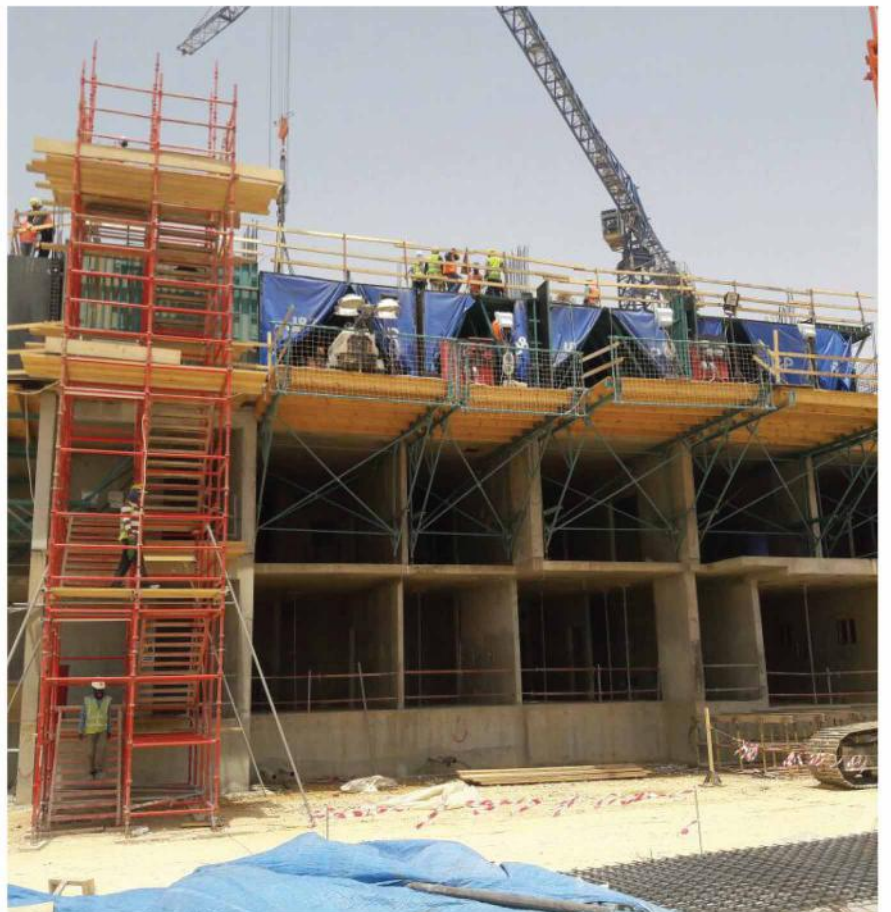


THE HUES MEGA PROJECT, NEW DELHI, INDIA
Residential Tunnel Form System- 5 Sets



SAUDI ARABIA MINISTRY OF INTERIOR MILITARY HOUSING PROJECTS, 4 SITES IN KSA

Jeddah, Yanbu, Riyadh, Dhamman - SAUDI ARABIA Residential Tunnel Form System-5 sets at 4 sites plus retaining walls.

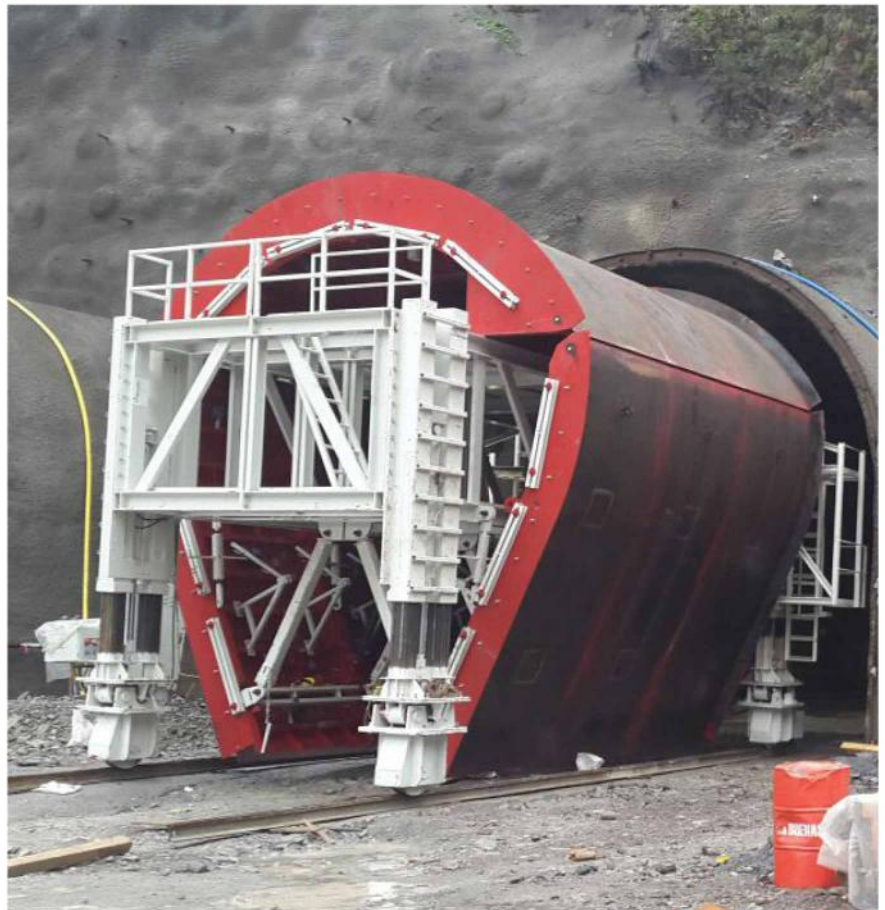


1.500+ 3.000 VILLAS LUXURY VILLA PROJECT, Al-Najaf, Iraq
Residential Tunnel Form System- 8 Sets. A challenging design for tunnel form. the developers spent many hours with the Dema design team adapting the project for fast economical daily casting

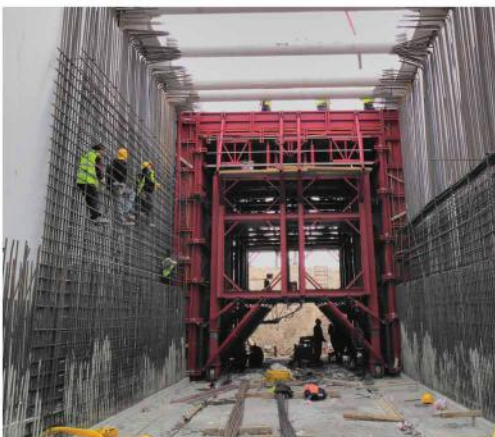


HYDROELECTRIC (HES) PLANT, Batum, Georgia

Dema supplied a special design and manufactured pipe formwork and infrastructure tunnelling formwork for the hydroelectric plant in Georgia



HIGH SPEED TRAIN TUNNELS, Ankara, Turkey
3 mega tunnelling formworks specially manufactured 8m high x 7m wide x 12.5m utilized to cast 3kms of high speed train line in Ankara, Turkey



Water Sewage Project, Mosul, Iraq

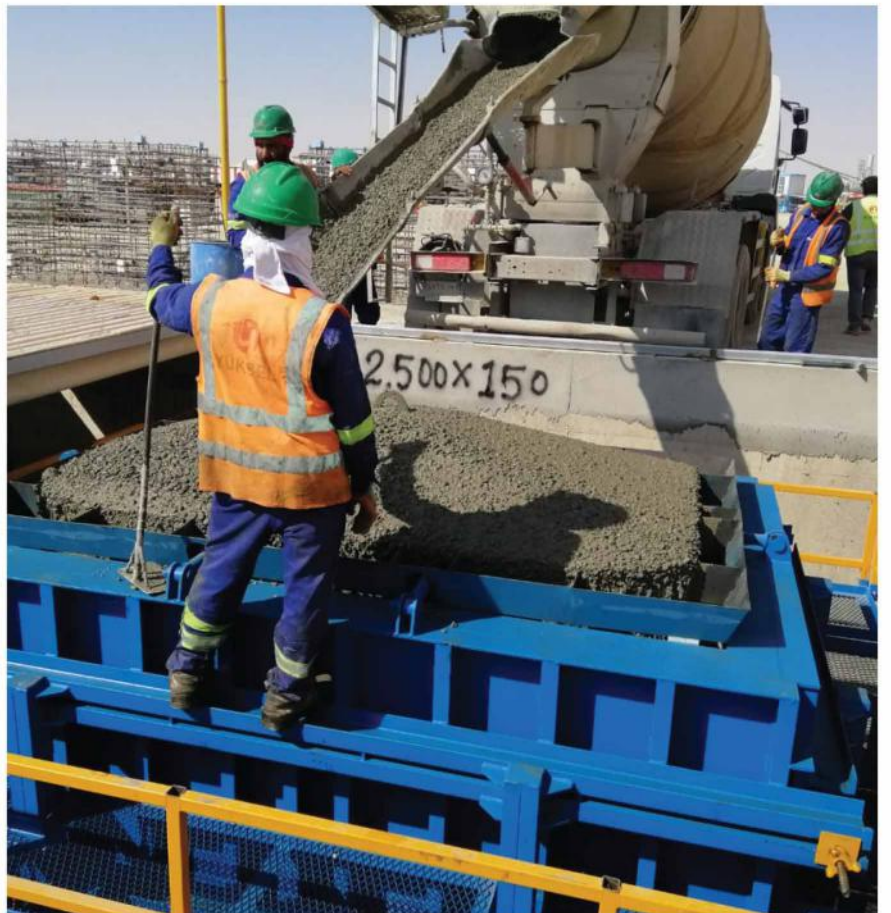


Baban Autobahn Bridges, Sulaymaniah, Iraq
Turnkey solution from formwork to all accessories like vibrators, steam chamber, pre-stressing eqips etc.



UNDERCITY MAIN DRAINAGE SYSTEM, Riyadh, Kingdom of Saudi Arabia

33 sets single and double box culverts covers. Fully hydraulic controlled internal and external closing mechanism. Now casting culverts at precast factory outside Riyadh to produce 44,000 culverts for main drainage under Riyadh city centre



**PRECAST MONOLOCK SUBSTATION FORMWORK,
Madrid, Spain**

One of many such cabin moulds manufactured for our longest serving client in Spain and their sister company in France



PRECAST CULVERT FACTORY, Samsun, Turkey
Single type Manhole



MOSUL DAM DENTATES STEEL CONSTRUCTION
The heart of Mosul , Dema gave its new life.



MOSUL BADUSH BRIDGE

A bridge which is indispensable in the city.



TURNKEY STEEL FACTORY DESIGN FOR COAL PROCESSING FACILITY, Golbasi, Ankara

Turnkey steel framed factory designed, manufactured and constructed by Dema Formworks in Golbasi, Ankara. Equipped with coal screening and crushing machinery also manufactured at the Dema factory.

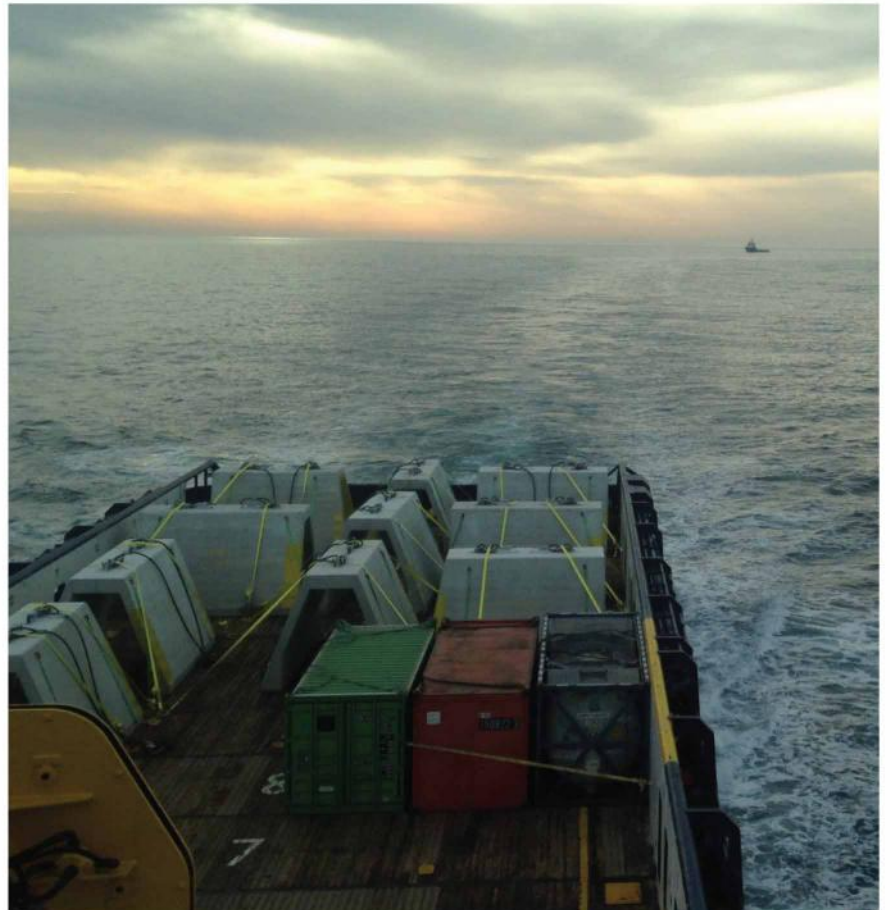


Concrete Distribution System, Ankara, Turkey



UNDERSEA GAS PIPE PROTECTION CULVERTS

Our client, an Australian international marine engineering company commissioned Dema to make 10 culverts each of 33 tons to be used by their client Allseas to protect the gas pipe on the Southstream project in the Black Sea near the Russia coast. Starting out as just manufacturing the culvert mould the scope developed into turn key delivery including concrete casting fitting with anodes and padeyes and load testing. Two months later, 3 more culverts of a different 44 ton design produced. All 13 concrete culverts now delivered and 10 are in position on the seabed.





REFERENCES

With reference projects in 38 countries over 5 continents Dema Formworks is becoming a truly global precast, formworks and structural steelworks company. With projects design, manufacture and technical support offered from the factory in Turkey and sales and service and distribution network handled from the UK office, Dema Formworks operations are streamlined for maximum efficiency. This way Dema can supply service and support to projects worldwide keeping the supply chain constant and the resulting costs to the end user to a minimum.

DEMA AROUND THE WORLD

**European Continent**

- Türkiye
- United Kingdom
- Bosnia and Herzegovina
- Germany
- France
- Kosovo
- Latvia
- Lithuania
- Norway
- Romania
- Spain
- Italy

Australian Continent

- Australia

Asian Continent

- Afghanistan
- Bangladesh
- India
- Iran
- Iraq
- Israel
- Kazakhstan
- Mongolia
- Qatar
- Russia
- Saudi Arabia
- Turkmenistan
- United Arab Emirates
- Uzbekistan
- Azerbaijan
- Georgia

African Continent

- Algeria
- Djibouti
- Ivory Coast
- Libya
- Mauritania
- Tunisia
- Ethiopia

American Continent

- Jamaica
- Venezuela

Please note DEMA policy is one of continuous development and product improvement. Information in this literature and product range may be subject to change without notice.



MULTIMEDIA

Dema Formworks has a range of literature, product animations and timelapses on our website www.demaform.com and online.

PRODUCT RANGE BROCHURES



SEE DEMA'S HANDBOOK & PRODUCT BROCHURES HERE



COMPANY VIDEOS



SEE DEMA'S ANIMATIONS, TIMELAPSES & TECHNICAL VIDEOS HERE



IMAGE LIBRARY



SEE DEMA'S PROJECT & MANUFACTURING PHOTOS HERE



COMPANY NEWS



SEE DEMA'S LATEST COMPANY & PROJECT NEWS HERE



Search 'Dema Formworks' on ISSUU, YOUTUBE & VIMEO also follow us on TWITTER, INSTAGRAM, FACEBOOK, PINTEREST and LINKEDIN for upto date company and product news. If you would like to be added to our mailing list, please send an email to info@demaform.com with the the heading 'ADD TO MAILING LIST



DEMA FREESTYLE LIFTS ' Your Freedom to move....'

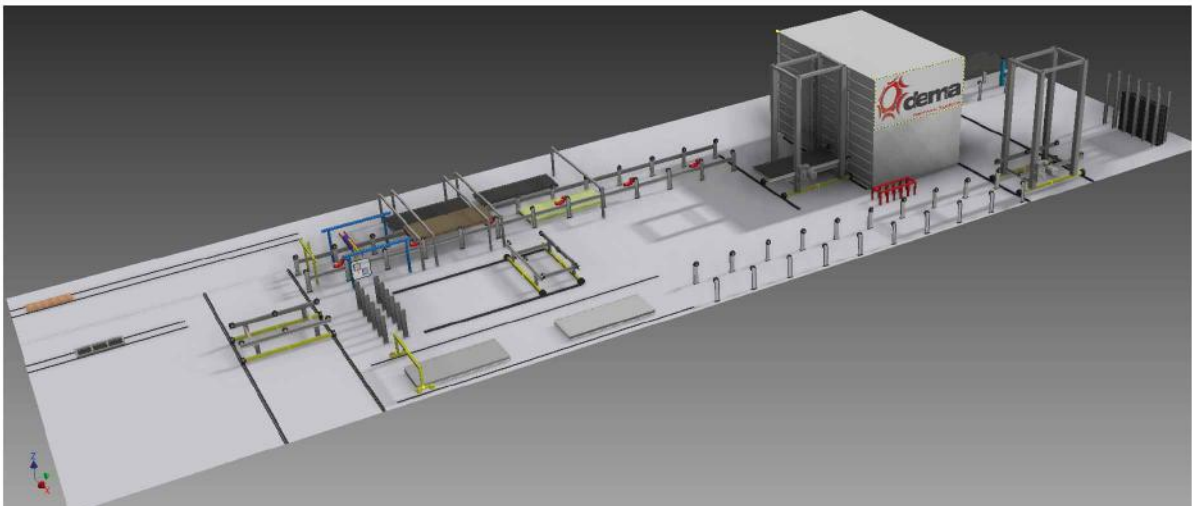
Dema is proud to announce that with the support of the governmental led TUBITAK (Scientific and Technological Research Council of Turkey) program; we will be introducing in 2019, Turkey's first and only shuttle lift system with differing models offering 20t to 100t carrying capacities Suitable for precast factories, stone yards, heavy steel manufacturers, ports and docks and any manufacturing companies with the need for flexible, changing use of storage areas and maximizing space and plant mobility. Currently our first model is under assembly and testing at the factory



Research and development realized in cooperation with the governmental backed Scientific and Technological Research Council of Turkey



Dema for many years has been manufacturing part and complete systems for leading European automated precast carousel system manufacturers and direct turnkey services to precast factories. owners. With knowledge and technical experience gained over the years, Dema is now able to offer full turnkey precast factory automated carousel manufacturing plants. Please contact us with your project specifications or ideas.



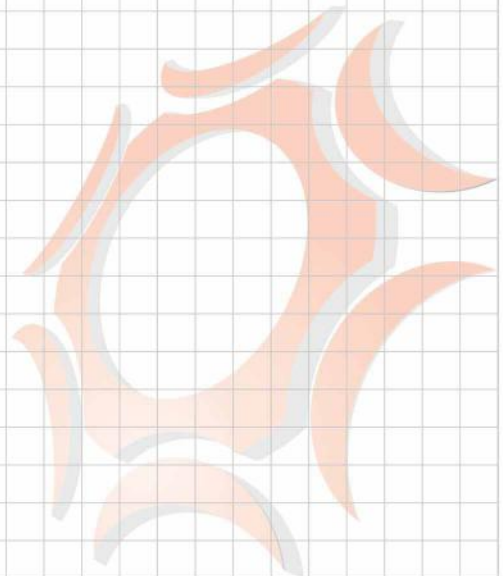
'Experience' is precious!

...../...../.....

dema
Formwork Systems

dereyim
makina kalip sistemleri

dema
construct



'Deneyim' en deęerli hazinedir...



info@deneyimmakina.com



info@demaform.com



info@demaconstruct.com

'Experience' is precious!

'deneyim' en değerli hazinedir...

FACTORY & HEAD OFFICE
TURKEY

Tel: +90 312 395 91 83

+90 312 815 15 44

Fax: +90 312 395 91 84

info@deneyimmakina.com

www.deneyimmakina.com

🇹🇷 +90 312 395 9183

INTERNATIONAL OFFICE
UNITED KINGDOM

Tel: +44 (0) 743 5306425

info@demaform.com

www.demaform.com

🇬🇧 +44 743 5306425

REPRESENTATIVE OFFICE



www.demaconstruct.com



www.deneyimmakina.com



www.demaform.com

İstanbul Yolu 35. Km Orhaniye Mah.Orhaniye Küme Evleri No: 330 Kahramankazan / ANKARA / TÜRKİYE

Tel: +90 312 395 91 83 / +90 312 815 15 44

Fax: +90 312 395 91 84